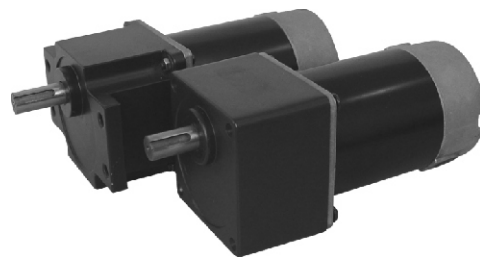
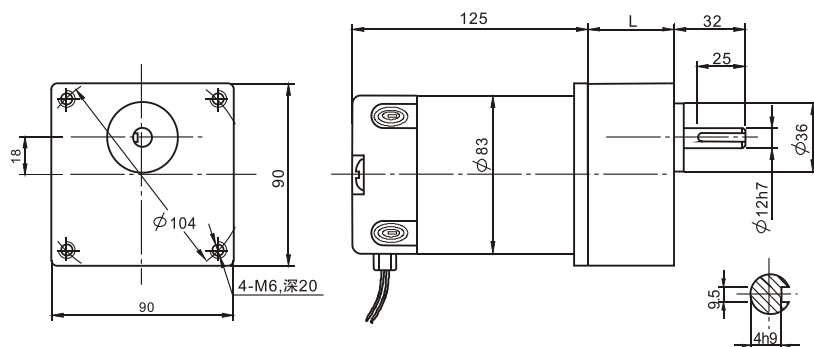


90JB200K / 83125 直流齿轮减速电机 90JB200K/83125 PM DC GEAR MOTOR

90mm 200K 齿轮减速
90mm 200K PLANETARY GEAR

● 外形和安装尺寸 Dimensions



● 电动机主要技术参数 Motor Technical Data

电机型号 TYPE	额定电压 Rated voltage VDC	空载转速 No-load speed r/min	空载电流 No-load current A	额定转速 Rated speed r/min	额定转矩 Rated torque kg.cm	输出功率 Output power W	额定电流 Rated current A	堵转转矩 Stall torque kg.cm	堵转电流 Stall current A
83125-2420	24	2000	0.8	1700	2.4	42	3.5	16	17
83125-2430	24	3000	0.9	2500	3	77	4.6	18	20

可以制造12V产品，转速、转矩指标与24V产品基本一致。

We can produce products of 12V. The index of rotating speed and torque is consistent with 24V.

● 齿轮减速电机主要技术参数 Gear motor Technical Data

90JB200K/83125-2420(83ZY125-2420)

减速比 Reduction ratio	3	5	7.5	12.5	15	25	30	50	75	100	120	150
减速级数 Number of gear trains	2	2	2	2	2	3	3	4	4	4	4	4
减速器长度(L) Length(L) mm	65	65	65	65	65	65	65	65	65	65	65	65
出力轴直径(ϕ) Dia. of shaft (ϕ) mm	12	12	12	12	12	12	12	12	12	12	12	12
空载转速 No-load speed r/min	667	400	267	160	133	80	67	40	27	20	16	13
额定转速 Rated speed r/min	567	340	227	136	113	68	57	34	23	17	14	12
额定转矩 Rated torque kg.cm	6	10	14	24	29	44	52	79	118	158	190	200
最大瞬间允许负载 Max. permissible load in a short time kg.cm	50	80	80	80	80	150	150	300	300	300	300	300

90JB200K/83125-2430(83ZY125-2430)

减速比 Reduction ratio	3	5	7.5	12.5	15	25	30	50	75	100
减速级数 Number of gear trains	2	2	2	2	2	3	3	4	4	4
减速器长度(L) Length(L) mm	65	65	65	65	65	65	65	65	65	65
出力轴直径(ϕ) Dia. of shaft (ϕ) mm	12	12	12	12	12	12	12	12	12	12
空载转速 No-load speed r/min	1000	600	400	240	200	120	100	60	40	30
额定转速 Rated speed r/min	833	500	333	200	167	100	83	50	35	27
额定转矩 Rated torque kg.cm	8	12	18	30	36	55	66	99	148	198
最大瞬间允许负载 Max. permissible load in a short time kg.cm	50	80	80	80	80	150	150	300	300	300