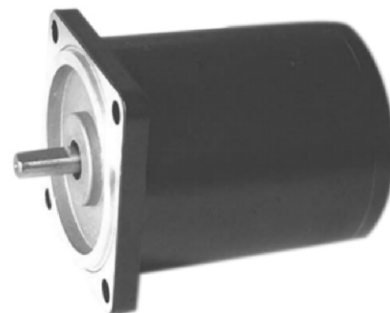
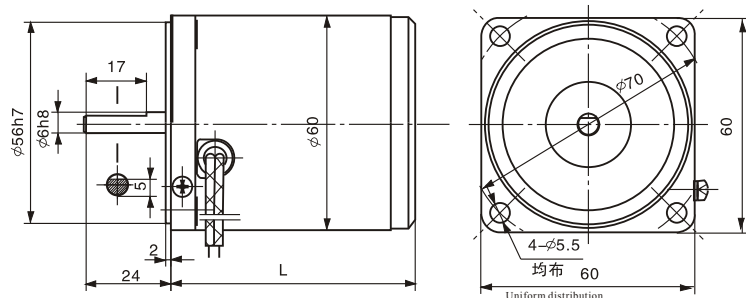


交流电动机

AC MOTOR

4W~10W 单相60mm
4W~10Single/Phase 90mm

● 外形尺寸 Dimensions



● 电动机的性能参数 Motor technical data

电动机型号 Type	输出功率 Power W	电压 Voltage V	频率 Frequency Hz	电流 Current A	起动转矩 Starting torque N.m	额定转矩 Rated torque N.m	额定转速 Rated speed r/min	电容 Capacitor μ F/VAC	运转形式 Operating mode	电机长度 Length
60YN04-1	4	110	50	0.18	0.04	0.032	1200	2.5/250	连续Cont	68.5
60YN04-2	4	220	50	0.10	0.04	0.032	1200	0.68/450	连续Cont	68.5
60YN06-1	6	110	50	0.23	0.055	0.048	1200	3/250	定格30min	68.5
60YN06-2	6	220	50	0.14	0.055	0.048	1200	0.8/450	定格30min	68.5
60YN06-1	6	110	50	0.23	0.06	0.048	1200	3/250	连续Cont	75.5
60YN06-2	6	220	50	0.14	0.075	0.048	1200	0.8/450	连续Cont	75.5
60YN10-1	10	110	50	0.32	0.078	0.073	1200	4/250	定格30min	75.5
60YN10-2	10	220	50	0.22	0.092	0.073	1200	1/450	定格30min	75.5
60YN10-1	10	110	50	0.30	0.078	0.080	1200	4.0/450	连续Cont	80.5
60YN10-2	10	220	50	0.20	0.092	0.080	1200	1.0/450	连续Cont	80.5